

ACCESSORIES

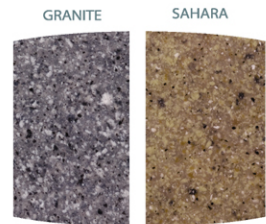
Fantasy Spas is constantly improving its products for consumers. These new innovations will add to the durability and quality of the Fantasy Spa while ensuring greater safety.

MIRAGE

ILLUSION

VISION

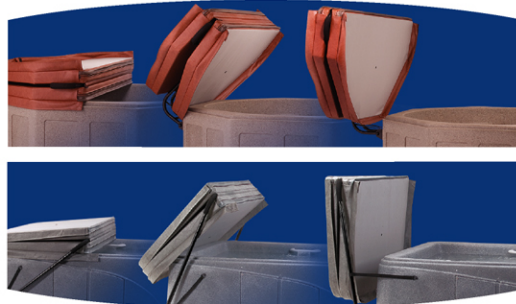
2007 Fantasy Spa shell colors:



Cover-Ease 1 (Vision Model)

Cover-Ease 2 (Mirage and Illusion Models):

Both Cover-Ease spa covers mount easily to your spa. They position and stores cover away from spa allowing full use and ease.



Flozone:

This system cleans your water better and reduces the need for chemicals. (all spas are ozone ready)



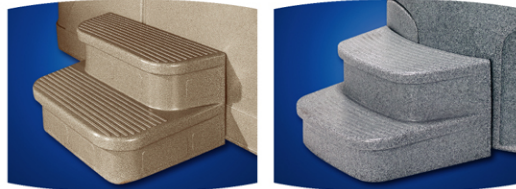
Multi-Lite:

Transform your spa with brilliant, ever-changing, colorful effects. Eight solid colors and two multi-modes.



Straight Step and Curved Step:

Create a safe and elegant entrance into your spa. Designed to match the exterior color of your spa shell.



FANTASY SPAS™

RELAXATION YOU CAN AFFORD TO ENJOY!



Place Dealer Information Here

FANTASY SPAS™

RELAXATION YOU CAN AFFORD TO ENJOY!

Manufactured by FREEFLOW SPAS
1735 South Baker Avenue, Ontario, California 91761
Voice: 909.947.9471 Fax: 909.947.9331



*All specifications contained in this brochure are subject to change without notice.

CHOOSE FANTASY SPAS

Beyond easy setup, a Fantasy spa is easy to maintain. It's constructed of technologically advanced polymers. The unicast shell is beautiful, but RokSolid™ — virtually impervious to the elements.

As the years go by you'll appreciate the low operating costs resulting from Fantasy Spa's intelligent engineering. The walls of each spa are completely filled with polyurethane insulation to provide maximum efficiency and strength.

Also enjoy Fantasy Spas exclusive dual speed therapy systems. In each unit you can soak while being gently massaged with the lighter speed setting or vigorous massaged on high speed depending on your needs or desire. Additionally all Fantasy Spas are pre-plumbed to accept an after-market ozonation system that can eliminate up to 80% of chemical use. Fantasy spas are available in two exciting colors: Granite and Sahara. Standard equipment also includes a Gray color ATSM registered safety cover with lock down clips adding convenience and safety to your spa experience.



Topside Controls:

Topside electronic controls provide a convenient way to command temperature, lighting and water-flow pressure.



Interchangeable Jets:

Each Spa has jets that are designed for 100% hydrotherapy, including the all important neck and shoulders area.



Top-loading Filters:

Top-loading filters are readily accessible for quick cleaning. Enjoy a safe, healthy spa environment without the hassles.



RokSolid™ Shell:

Freeflow's RokSolid™ advanced Polymer shell provides a surface that is easy to keep clean. Simply wipe it down as needed.

Set it up:

Place your Fantasy Spa on nearly any flat surface with little preparation.



Fill it up:

Use a standard hose attached to any domestic water supply.



Plug it in:

The GFCI protected cord plugs into a standard outlet.



And Enjoy!

Now, let the soothing therapeutic action take you away.



The Therapy Seat is designed to relieve muscle tension and stress with a deep tissue massage targeting pressure points in the neck and shoulder.

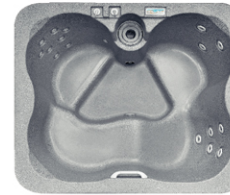
Specifications:

- 81" L x 69" W x 30" H
206 cm x 176 cm x 76 cm
- 230 Gallon Water Capacity
871 Litres Water Capacity
- 370 lbs Dry Weight
168 kg Dry Weight
- 110/220v Convertible
230v / 16 amp Electrical
- 1kw/4kw Heater
2 kw Heater
- 30 sq. ft. Filter
2.78 sq/m Filter

4 SEATING POSITIONS

VISION

The **VISION Spa** uses deep ergonomic seating complete with a therapy chair, dual purpose waterfall handrail and a cool down area.



- 2 hp, Dual Speed Pump
- Digital LED Controls
- 12v Light with Mood Lenses
- Bottom Drain
- Full Foam Insulation
- Safety Cover / Locking Clips
- RokSolid™ Shell
- 17 Total Jet Count:
 - 8 Micro Injector Jets
 - 6 Storm Directional Jets
 - 2 Storm Rotating Jets
 - 1 Designated Ozone Jet



Relax with soothing sounds and a delightful visual with the new Waterfall Feature. Adjustable for a full stream, or shut off completely.



Our Turbo Whirlpool Jet creates an unmatched swirling water massage. The boldest performance of any jet, anywhere.



5 SEATING POSITIONS

ILLUSION

The **ILLUSION Spa** comfortably seats four, including a deep bucket chair complete with rotating back jets and a waterfall feature.

Specifications:

- 77" L x 66" W x 29" H
196 cm x 168 cm x 74 cm
- 230 Gallon Water Capacity
871 Litres Water Capacity
- 255 lbs Dry Weight
116 kg Dry Weight
- 110/220v Convertible
230v / 16 amp Electrical
- 1kw/4kw Heater
2 kw Heater
- 30 sq. ft. Filter
2.78 sq/m Filter

- 1.5 hp, Dual Speed Pump
- Digital LED Controls
- 12v Light with Mood Lenses
- Bottom Drain
- Full Foam Insulation
- Safety Cover / Locking Clips
- RokSolid™ Shell
- Waterfall Feature
- 12 Total Jet Count:
 - 9 Storm Directional Jets
 - 2 Storm Rotating Jets
 - 1 Designated Ozone Jet

Specifications:

- 75" L x 75" W x 33" H
191 cm x 191 cm x 84 cm
- 250 Gallon Water Capacity
946 Litres Water Capacity
- 300 lbs Dry Weight
136 kg Dry Weight
- 110/220v Convertible
230v / 16 amp Electrical
- 1kw/4kw Heater
2 kw Heater
- 30 sq. ft. Filter
2.78 sq/m Filter

5 SEATING POSITIONS

MIRAGE

The **MIRAGE Spa** incorporates a circular open interior, spacious footwell, a turbo whirlpool jet and a no-jet cool down seat for relaxing.



- 2 hp, Dual Speed Pump
- Digital LED Controls
- 12v Light with Mood Lenses
- Bottom Drain
- Full Foam Insulation
- Safety Cover / Locking Clips
- RokSolid™ Shell
- 14 Total Jet Count:
 - 6 Micro Injector Jets
 - 4 Storm Directional Jets
 - 2 Storm Rotating Jets
 - 1 Turbo Whirlpool Jet
 - 1 Designated Ozone Jet